



Final benchmark | Our inaugural benchmark has been finalized!

We are pleased to share that the EDCI benchmark for our inaugural year has been finalized! Following the closure of the data submission period for our inaugural year, BCG Expand has aggregated data into the final private markets benchmark.

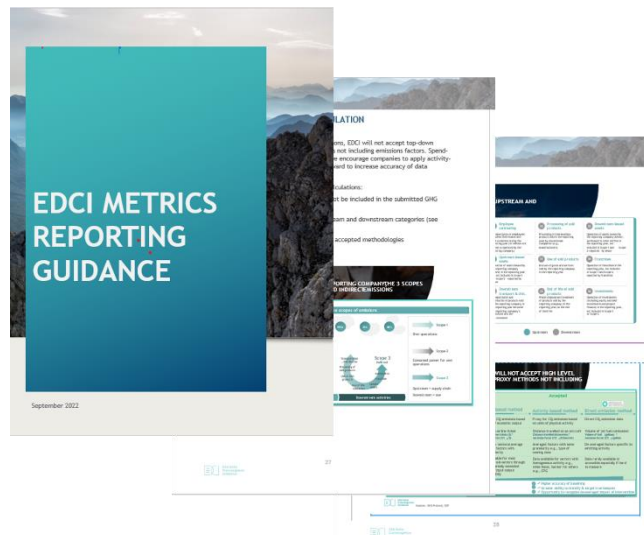
Revised metrics guidance | Improved data submission guidance for 2023

The EDCI has updated the data submission guidance for next year, drawing extensively on feedback from EDCI participants (a huge thank you to all who have contributed to this through surveys, focus groups and 1:1 conversations!) as well as BCG Expand's experience gathering and validating data in the inaugural year and input from topic experts. These updates, including one additional data point to collect in 2023 (gender diversity in the C-suite), were finalized during the Steering Committee sprints, which have recently concluded.

We are pleased to share the updated guidance and excel template for data submission requirements ahead of the upcoming 2023 cycle! Should you have any questions in regards to submitting data, please reach out to ESGBenchmarkData@bcg.com.

[Link to updated metrics guidance](#)

[Link to updated excel template](#)



Data submission update | GPs can submit data in 2023 via tech platforms

As part of our efforts to streamline the EDCI data submission process for GPs, we are excited to announce that, for 2023, we will be working with ESG tech platforms to enable GPs to choose to submit data directly into the EDCI via an in-bound API (as an alternative to submitting data via Excel template). This will be an open (and completely voluntary) offer to all tech platforms currently storing ESG data on behalf of EDCI GPs. Data submission via the Excel template will continue to remain an option for GPs in this upcoming cycle.

For more information regarding data submission guidelines and the development of the EDCI's collaboration with tech platforms, please visit our [Metrics webpage](#).

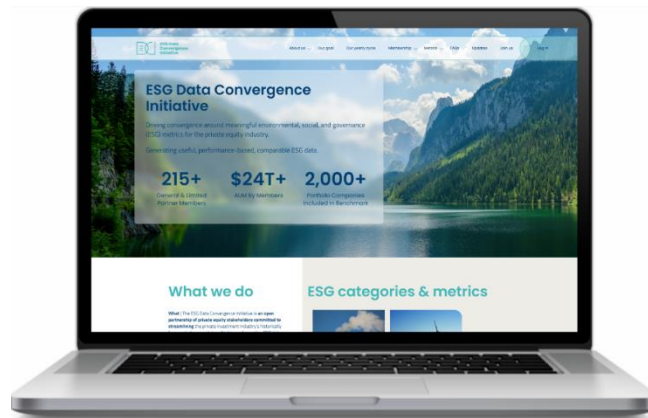
Operating model | EDCI to continue current form for 2023 cycle

While the EDCI Steering Committee continues to explore options for the EDCI's long term operating model, the committee has formally invited BCG Expand to return for the 2023 cycle. This will help ensure continuity in the EDCI GP and LP experience (with the existing data submission process, benchmarking platform and legal agreements remaining in place).

Reminder | New website is live!

Just a quick reminder that the new EDCI website is now live! All initiative-related content is now available here:

[Link to EDCI website](#)



Please reach out to ESGmetrics@bcg.com with any questions or concerns. Thank you for your collaboration with our initiative!



**ESG Data
Convergence
Initiative**